

ATEX manual stacker 1.000Kg to 1.600 mm

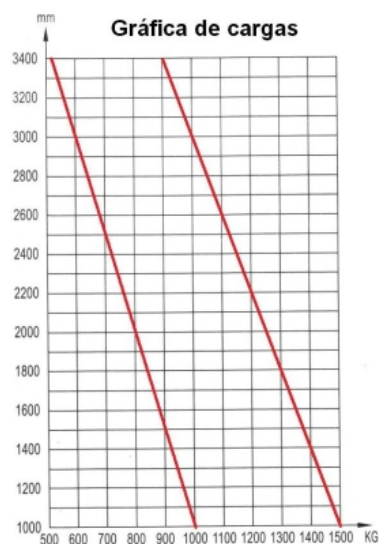


Description

ATEX stacker manual lifting and translation, the most economical solution for lifting loads up to 1,000 kg. Descent controlled loads. Suitable for areas with small / medium space. Safety grid. Overload safety valve. Brakes on wheels. Marked CE/EX.

Technical data

Reference	16000-ATEX
Dimensions (mm) length x width x height	1.420 x 760 x 2.000
Weight Kg	200
Load	1.000
Drum	



ATEX manual stacker 1.000Kg to 1.600 mm

