

# Cage goes up people lateral entry nails

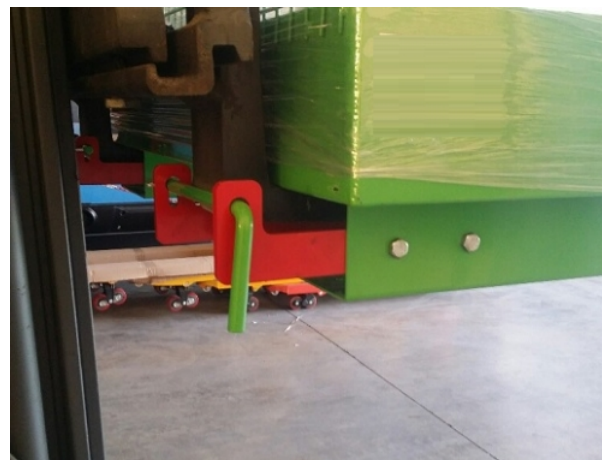


## Description

Platform for wheelbarrow, useful for repairs and maintenance work in areas located at a certain height. Built in profiled steel with non-slip platform work and safety railing. Maximum load of 2 people or 300 kg big drawer for tools. Work surface: 1200 x 800 mm. Access openings for the introduction of the forks of the truck. Retaining chains for mooring to the truck. Lateral folding rear for storage optimization.

## Technical data

Reference	4030-L
Dimensions (mm) L x W x H	1.200 x 800 x 2.100
Characteristics	Without wheels lateral entry nails
Weight Kg	90
Lifting base	6.000 mm
Capacity Kg	300



# Cage goes up people lateral entry nails

