

# Implement container dumper

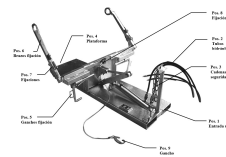
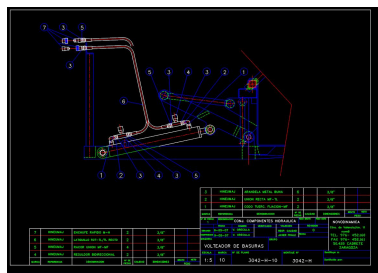
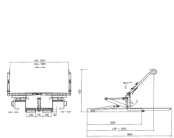


## Description

Turner truck perfect for transporting, emptying and cleaning of large pans (800 and 1100 liters with 4 wheels). Robust design with clip for a perfect fit in the container. Safety chain to prevent the slide by nails turner truck. A steel cable for securing the container lid. The dump is controlled at all times by elevated nails truck and hydraulic systems (130 bar).Has a regulating valve for regulating the speed of turning the container. Made of galvanized according to EN ISO 1461. CE Marked. Possibility custom manufacturing (other measures).

## Technical data

<b>Referen</b>	3042-H
<b>Load Kg</b>	1.850 x 1.390 x 650 cube 800-1.100 L.



## Implement container dumper

