

Special industrial tows

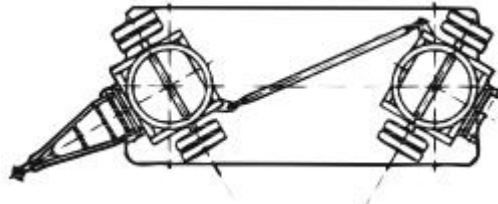


Description

Industrial Trailer for 3 Ton dual brake impeller and spear. Metal surfaces, with pneumatic tires, optional superelastic tires. Marked CE. Lance to engage in wheelbarrow and rear hitch to train.

Technical data

Reference	ESPECIAL
Dimensions (L x W x H)	
Fixed wheels	
Swivel wheels	
Tyre	
Weight Kg	
Load	



Special industrial tows

